

**American Topical Association
2015 National Topical Stamp Show
Study Unit Literature Competition
Prospectus**

Entries will be judged on the new criteria as a result of feedback from last year's Study Unit Literature Competition judges and contestants. The new judging criteria will be announced in May 2015.

Awards will be made in five levels: Gold, Vermeil, Silver, Silver Bronze, and Bronze. A medal level certificate will be presented to each exhibit along with a virtual medal that can be used in the journal and/or the unit's web page.

There will be three levels of competition:

- A. For units with less than 50 members
- B. For units with 50 to 200 members
- C. For units with more than 200 members

A grand award will be presented for each of these levels. Awards will be presented at the Banquet on Saturday, August 1, 2015.

Units which produce electronic versions of the journal may enter as long as hard copies are submitted.

Submission of an entry signifies acceptance of these rules.

Only ATA-affiliated study unit periodicals are eligible.

An emphasis will be placed on topical relevance. Consideration will be given to diversity of content, allocation of space to substantive and informative articles, columns, features and overall value to the membership.

Volunteer judges will judge this competition; their decision will be final.

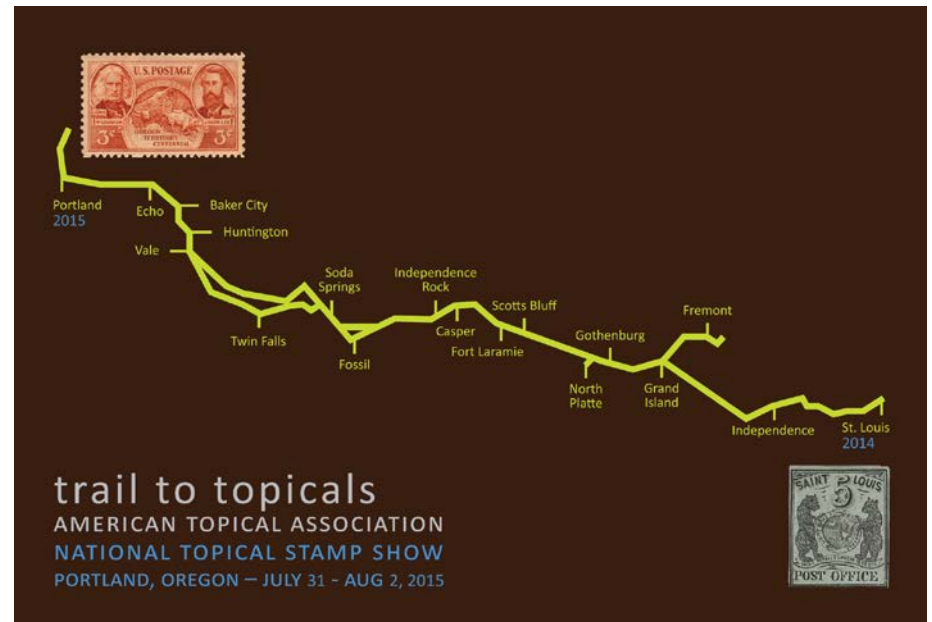
Entries should include 4 issues published during the year of May 2014 to April 2015.

Your application and *four* copies* of *each* issue must be postmarked by June 19, 2015, along with a check (payable to "ATA") for the \$10 entry fee if you do not wish to have the journals returned to your study unit or \$20 if you do wish to have the copies returned to your study each unit, Mail to:

Jeff Hayward, ATA Study Unit Coordinator, P.O. Box 60180, Staten Island, NY 10306

* Three copies for judges, one for display.

Questions: stamps@jeffhayward.com



American Topical Association
National Topical Stamp Show 2015
Study Unit Journal Competition Prospectus
July 31-August 2, 2015

Monarch Hotel and Conference Center
12566 SE 93rd Ave
Clackamas, Oregon 97015
(503) 652-1515